



Instaline

Thermoplastic Road Marking

Applications

Ultracrete Instaline is a pre-formed thermoplastic road marking system ideal for the reinstatement of small line marking areas on car parks, roads and carriageways, etc. after maintenance work has taken place to enable instant road opening.

Technical

Ultracrete Instaline is supplied in 5 metre, 100mm wide and 3mm thick rolls for easy handling. The pre-formed markings are thermoplastic hydrocarbon resin, which consists of aggregates, pigments, binders and glass beads to meet the requirements of CEN/TC226, BS EN 1871 and BS EN 1436. Ultracrete Instaline also conforms to the European Standard BS EN 1423 and Chapter 11 of the Specification for Reinstatement of Openings in Highways. Ultracrete Instaline is available in yellow, white, primrose and red on request.

Skid Resistance

When Ultracrete Instaline is applied the thermoplastic surface provides a minimum skid resistance value of 55 SRV units.

Reflectivity

Standard Ultracrete Instaline contains 20% glass beads, achieving high reflectivity for night time visibility.

Durability

Ultracrete Instaline pre-formed road marking is made from long lasting thermoplastic material especially suitable for heavily trafficked areas, and has many times the lifetime of normal traffic paint.

Preparation

Ultracrete Instaline is easy to apply on asphalt and macadam surfaces. Always ensure that the surface to be marked is clean, dry, and free of dust, chemicals and any significant oil substances. Draw guidelines in chalk for the correct positioning of the material.

Placing

Pre-heat the surface making sure it is free from moisture. Remove the Ultracrete Instaline pre-formed road marking from its protective wrapping and place on the road surface (note: concrete surfaces will require priming before product application). Once in place, heat the Ultracrete Instaline pre-formed marking band with a propane torch. The heat should be applied from a distance of approximately 200–400mm (8"-16") from the material. Use a slow even sweeping motion making sure you do not excessively spot-heat any areas as this may scorch the material causing bubbling and discolouration.

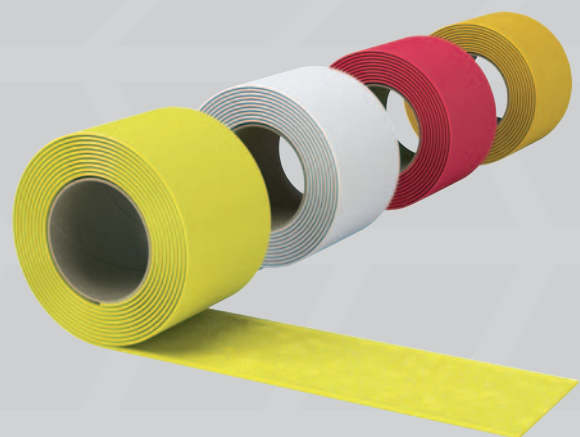
Precautions

When the weather is warmer and road temperature higher, the setting time for the material may be slightly longer. Do not use Ultracrete Instaline when it is raining or snowing. Ensure surfaces treated with salt or de-icers are fully washed, as Ultracrete Instaline will not bond with these substances. Do not unpack more material than is necessary, as materials will harden when exposed to UV rays and take care in excessively cold weather, as the material will become brittle.



Features & Benefits

- Essential for the finishing of repairs and reinstatements – instant permanent low cost option for small repairs
- Simple to use, crisp clear pre-formed markings
- Durable – asphalt and macadam compatible
- Low labour intensive
- Minimises Traffic Management Act penalties



Related Products

Ultracrete Instagrip Anti-Skid Patch Repair

Ultracrete LMP Line Marking Paint

Ultracrete Instaband Skid Resistant Overbanding Tape



Instaline

Thermoplastic Road Marking

Health & Safety

Please ensure road safety precautions are in place and health and safety guidelines followed when using propane gas. Do not breathe smoke or vapours released by the product when hot or by the gas burner. Repeated or daily over exposure to smoke vapours may cause an allergic respiratory reaction.

Hot Products Only: Avoid skin contact with hot product. In case of contact with skin, immediately immerse in or flush area with water. Do not remove product from area and seek medical advice. In case of contact with eyes rinse with plenty of water and seek medical assistance. For a full updated Material Safety Data Sheet please visit www.instarmac.co.uk

Product Details

Unit/Packaging	5 Metres x 100mm roll, 5 rolls per pack
Storage	Do not expose to UV rays as materials will become hard. To ensure material does not become brittle prior to using in the field, it is advisable to keep it warm in the footwell of a vehicle. Store in tightly closed original container in a dry and cool place
Shelf Life	Shelf life in correct conditions for sealed packaging is 6 months. In cold weather conditions application will be assisted by storing tape overnight at room temperature
Colours	■ Primrose ■ White ■ Red ■ Yellow Note: Red colour available on special request

Contact Us

Instarmac® Group plc, Birch Coppice Business Park, Danny Morson Way, Dordon, Tamworth, Staffordshire, B78 1SE, United Kingdom

Tel: +44 (0) 1827 872244 Fax: +44 (0) 1827 874466

Email: email@instarmac.co.uk Order: orders@instarmac.co.uk Website: www.instarmac.co.uk

Ultracrete products are guaranteed against defective materials and manufacture, and will be replaced or money refunded if the goods do not comply with our promotional literature. We cannot however accept any liability arising from the application or use of our products because we have no direct or continuous control over where and how our products are used. All products are sold subject to our conditions of sale, copies of which may be obtained on request.